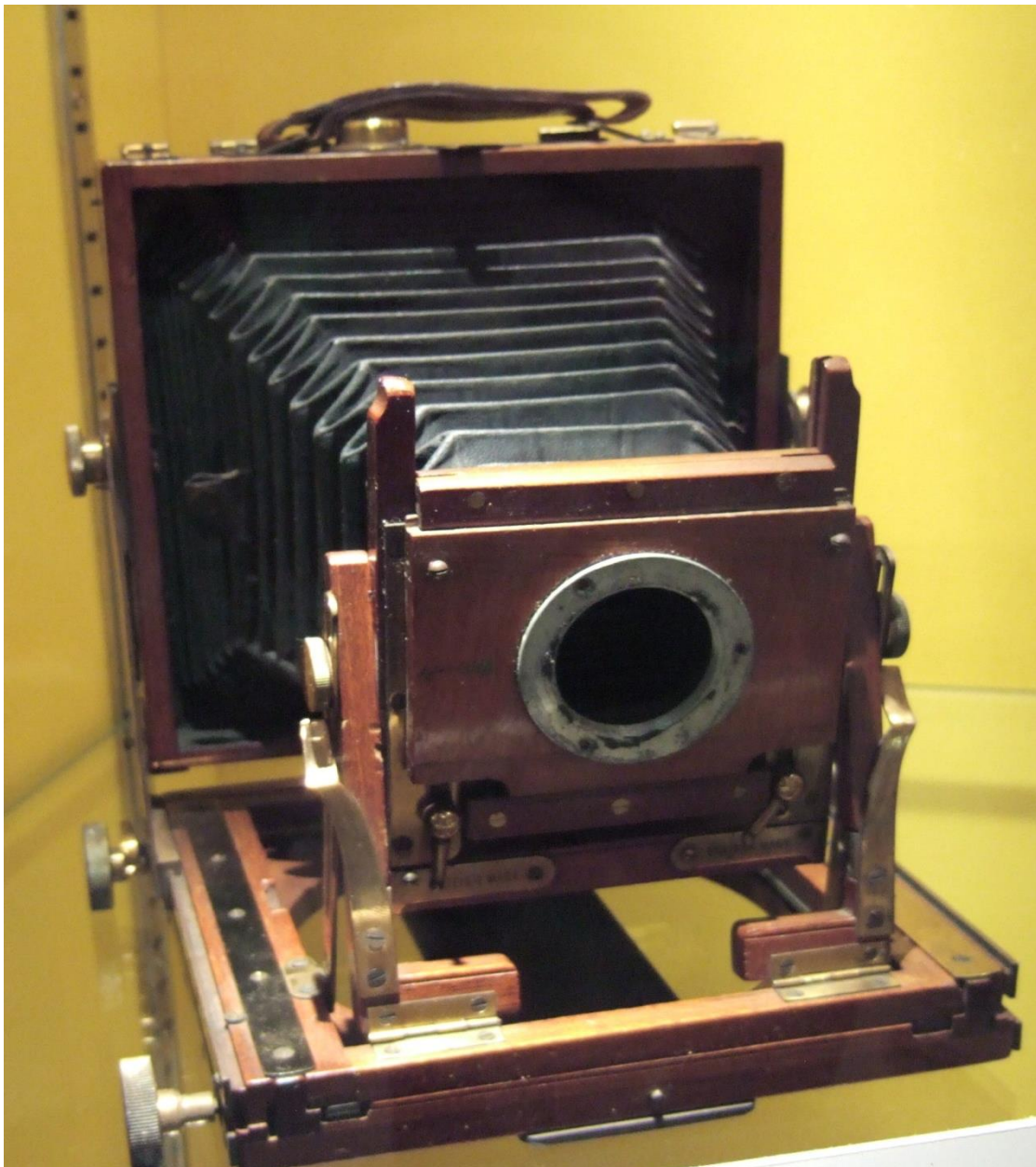


Smile Please: A Brief History of Photography Discovery Trail





HELLO. We hope you enjoy this Discovery Trail around the museum. Have fun and see how many questions you can answer.

When you've finished, come to the main desk and collect your sticker.

Look in all the cases.



How many cameras are on display in the museum?

Which is the oldest camera on display?



Look carefully at some of the cameras. Think of 2 ways they are different from cameras today.

PERCY REDJEB PANEL

Percy Redjeb started a business in Borehamwood, printing and publishing postcards.



Can you find the 2 black Scottie dogs and the sailing ship?

How can you tell these pictures were taken a long time ago?



ELSTREE AND BOREHAMWOOD TIME LINE

Have a look in the case.



Find the musket balls which were discovered in Scratch Wood. A musket was a type of gun used in the 17th century.

Q: What do you think the musket balls are made of?

Q: How do you think they ended up in Borehamwood?



This is an early type of pipe.

What is it made of?



Take a really close look at this pipe. What can you see on the bowl?

CHILDHOOD AND SCHOOLS

Look for the wooden soldiers. How many are there?

Did you know? Before biros, ink-pens were refilled from ink pots which slotted into a hole in the desk top?



Can you find the ink pot?



Now look for Sunny Jim, the knitted bunny and the jigsaw.

Don't forget to look in the drawers!

Where would you have found the Sunny Jim character when it first appeared in 1902? On

Look at the other toys in the cabinet.

Draw the toy you liked the best in the box below.



WE HOPE YOU'VE HAD FUN AT THE MUSEUM TODAY

Before you go, have a look at the last display case by the desk.

Can you find the *Coca-Cola* camera? What colour is it?



Can you find the ghost? Clue: **STEREOSCOPIC VIEWER**



Draw the camera you liked the best, in the box below

A large empty rectangular box with a blue border, intended for drawing a camera.

REMEMBER TO COLLECT YOUR STICKER